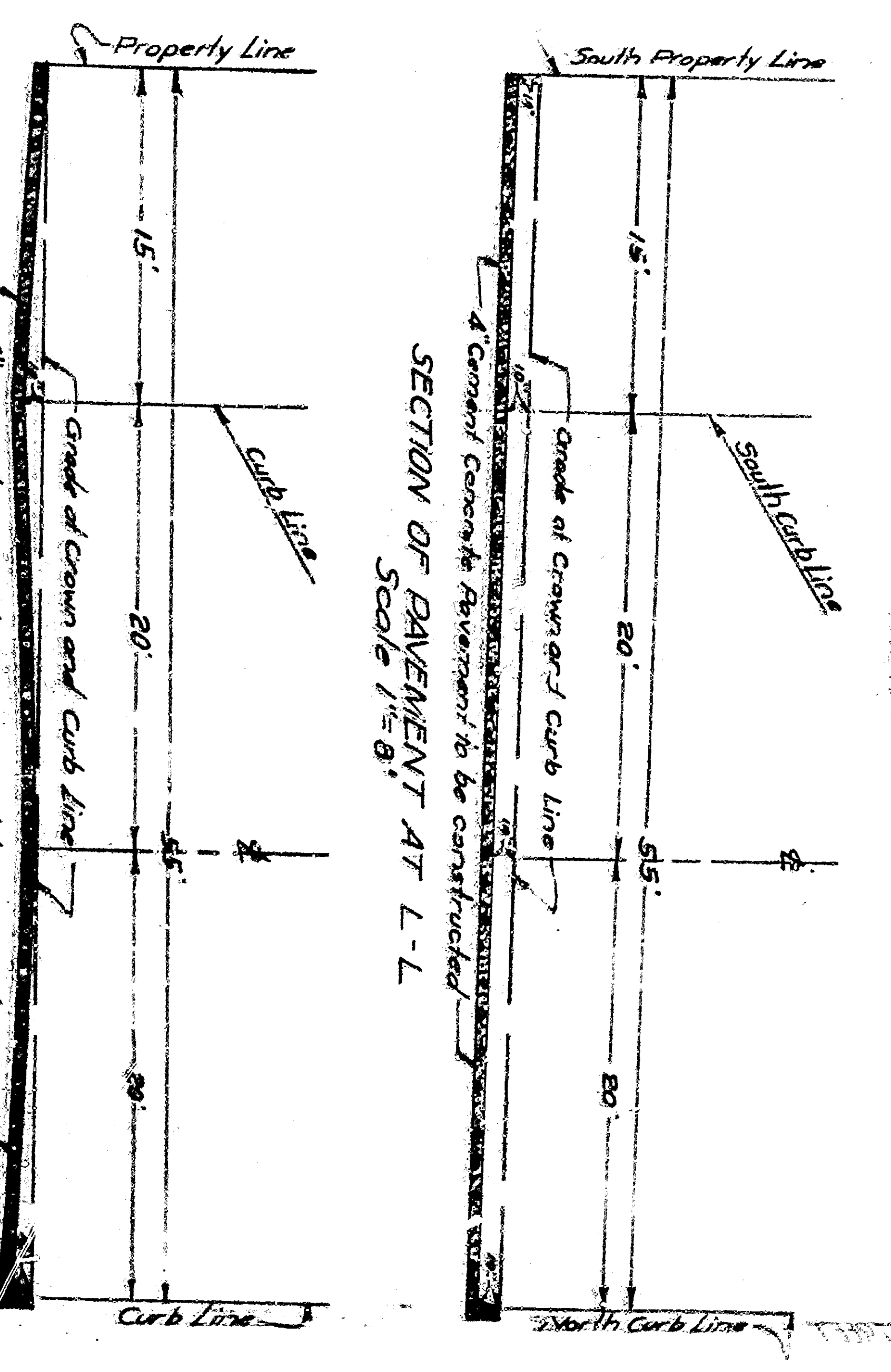


SHEET No 2
PART No 1
PLAN No 500
FOR THE IMPROVEMENT OF
37th STREET
BETWEEN
SIERRA WAY AND MOUNTAIN VIEW AVENUE
CITY OF SAN BERNARDINO CALIFORNIA
 City Engineer
 Scale as shown



SECTION OF PAVEMENT AT L-L
 Scale 1/8" = 1'-0"

SECTION OF PAVEMENT AT K-K
 Scale 1/8" = 1'-0"

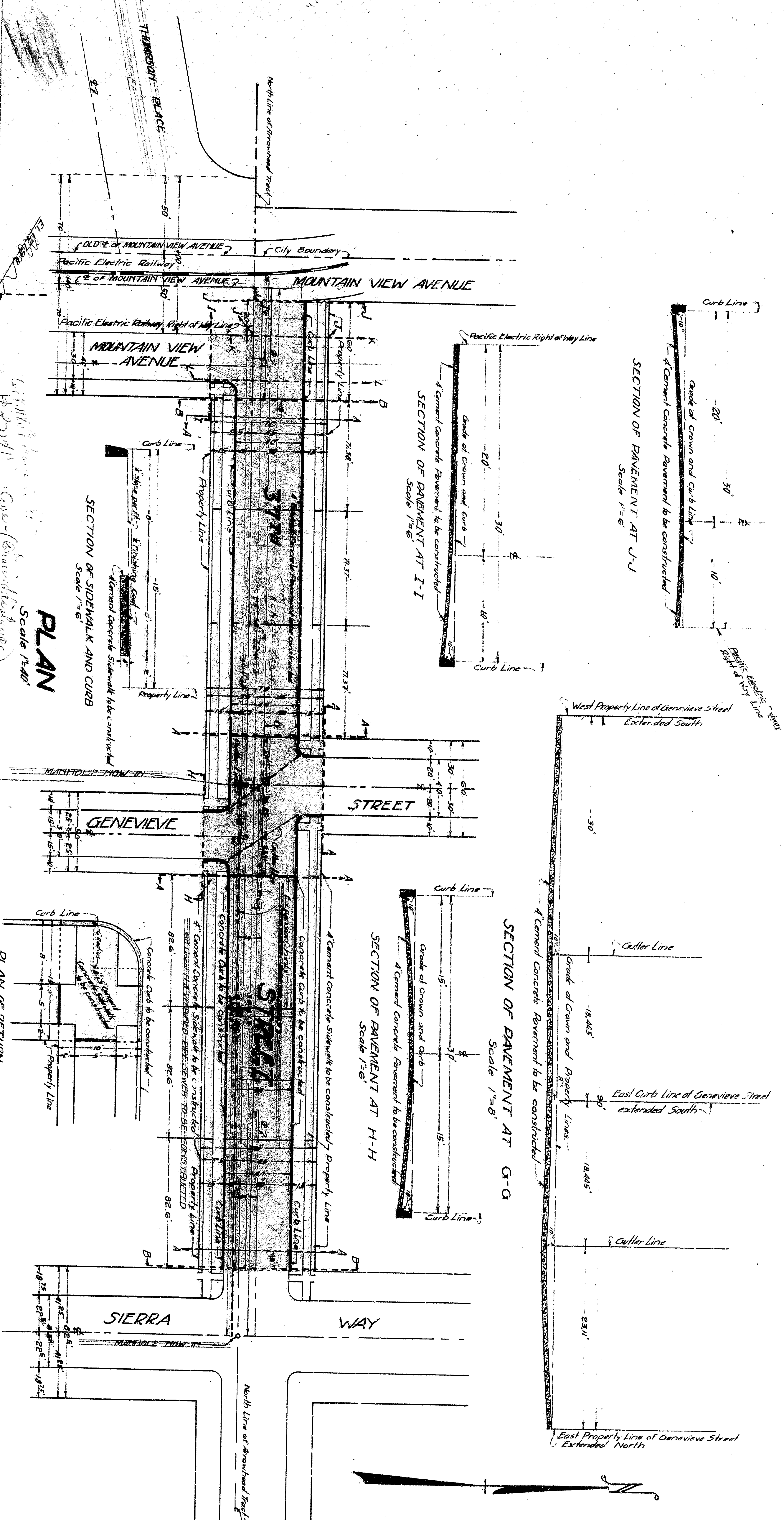
Note: Improvement on Street No. 37th St. between Street No. 1 Geneva Street and Section 4th and 5th Streets.
 See Station Sheet No. 1.

TITLE TO STREET

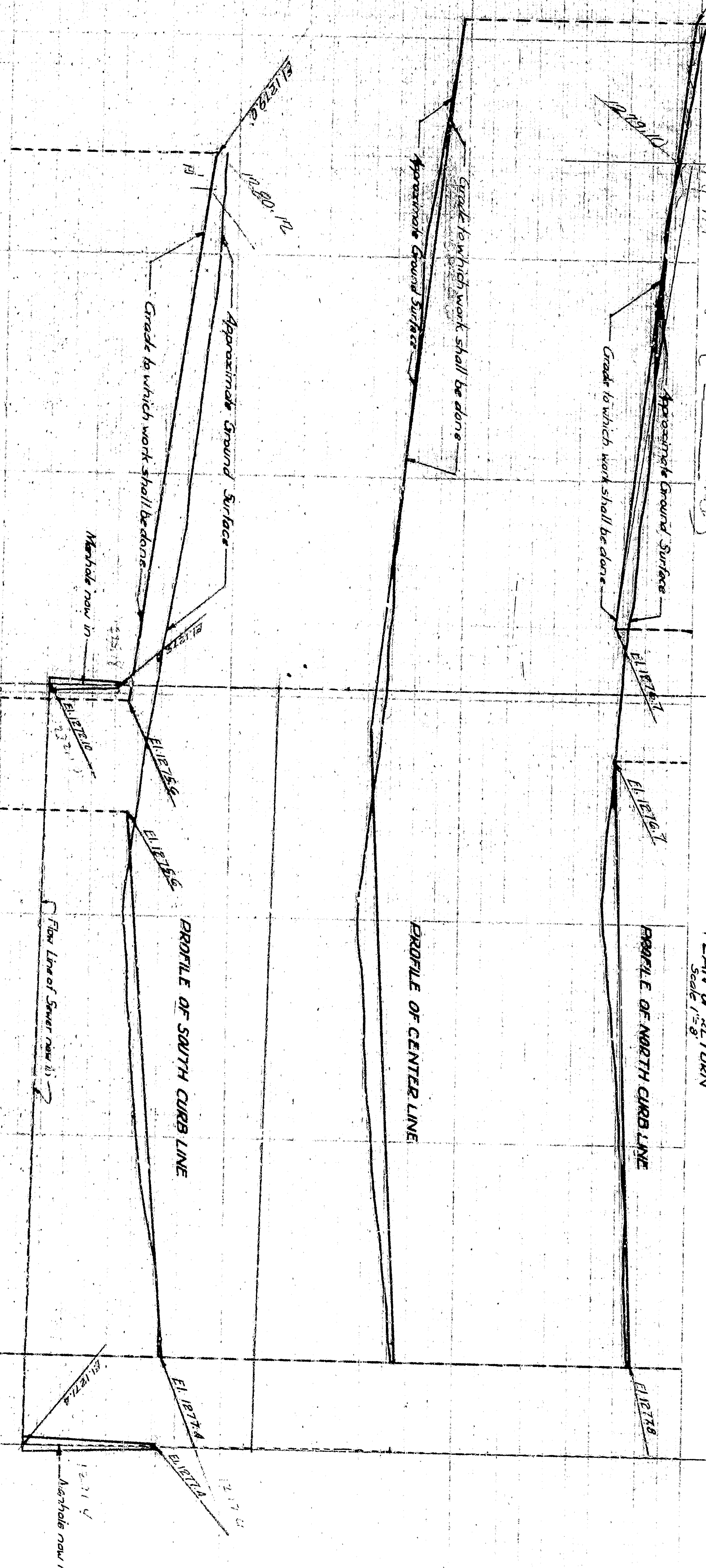
This is 37th STREET by the City of San Bernardino is by dedication by the City of San Bernardino as recorded in Book 39 of Maps Page 65 as recorded in Book 88 of Maps Page 62 Records of San Bern. County California.

GRADE ORDINANCE

Grade of 37th STREET established March 29 1924 Ordinance No. 1295



PLAN
 Scale 1/8" = 1'-0"



PROFILE
 Scale 1/8" = 1'-0"

Black Line shows approximate Ground Surface.
 Red Line shows Grade to which work shall be done.
 Blue Line shows New Line of Street.
 Scale Vertical 1/8" = 1'-0"